

Gliffy Diagrams for Jira

Xporter for Jira allows you to export diagrams from [Gliffy Diagrams for Jira](#) app as a normal image.

Definition

Install the app and add the Gliffy diagrams to your issue.

To export the image and its properties, include the following mapping on your template:

Expand to see the sample code

```
#for images}

${set(extension,%{var name = '${Images[n].Name}'.split('.'); var extension = name[1]; extension})}

#{if (${extension}.equals('gliffy'))}
  ${Images[n].Image}
  ${Images[n].Name}
  ${Images[n].ID}
  ${Images[n].Size}
  ${Images[n].HumanReadableSize}
  ${Images[n].Author}
  ${Images[n].Created}
  ${Images[n].MimeType}
  ${Images[n].ThumbnailURL}
#{end}
#{end}
```

That's it. No other special configuration is needed.

Example

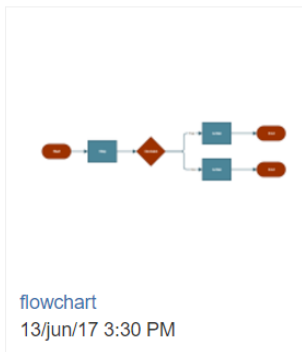
Let's export a Gliffy Diagram.

As you can see in the image below, we've already created a diagram.

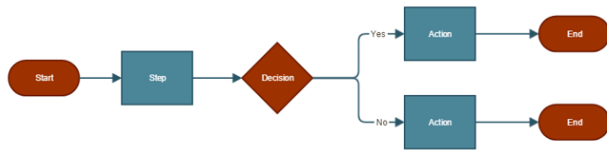
Gliffy Diagrams

Sort ▼

+ Add Diagram



Then, we export it using the template previously created.



flowchart.glify

10102

24684

24,11 Kb

admin

2017-06-13T15:30:26.396+01:00[Europe/London]

application/zip

<http://localhost:8080/rest/gliffy/1.0/diagrams/thumbnail?issue=XPOR-9&title=flowchart>